

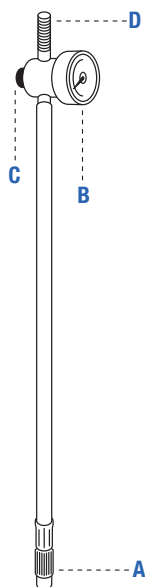
Deinstallation

- To remove the seat, open the buckle of the aircraft belt (5)
- Then pull the aircraft belts through the belt guide



WARNING! In order to keep your child properly protected during the flight it is absolutely essential that you use the car seat as described in this manual.

CONNECTING THE MOBILE PRESSURE INDICATOR



- Connect port A with the standard car valve of the nachfolger HY5 by unscrewing it, until it is firmly connected.
- The mechanical pressure indicator shows you the current pressure in the nachfolger HY5 at any time. The pressure should be between 0.6 - 1.2 bar.
- If the pressure is outside of this range:
 - ≥ 1.2 bar, you can reduce this by pressing the pressure release button C.
 - ≤ 0.6 bar, you can increase this by connecting the nachfolger pump to port D.

NOTE! Check with your airline before flying about their safety regulations and using the child seat. The child seat must only be installed on a seat facing in flight direction and assigned by the airline. Ensure that the child seat must be secured at all times, even if you take out your child when the fasten seat belt sign has been switched off. An unsecured child seat could injure other passengers in the event of turbulence or an emergency landing.

CHARGING THE MOBILE PUMP

The mobile pump allows maximum flexibility, as well as mobility and further intensified the simplicity of the nachfolger HY5 series.

Charging the pump:

The pump can or should be easily recharged with the charger on the 12 V socket in the car while driving, so it is always ready when you need it while traveling.

NOTE! Especially when traveling by airplane, ensure that the pump will not be activated accidentally by other objects.

PACKAGE

- 1 × Charger for cigarette lighter
- 1 × Belt clamp
- 1 × Mobile pressure indicator
- 1 × User manual



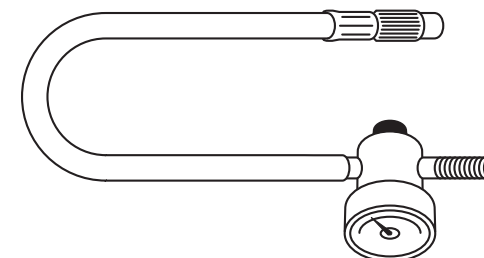
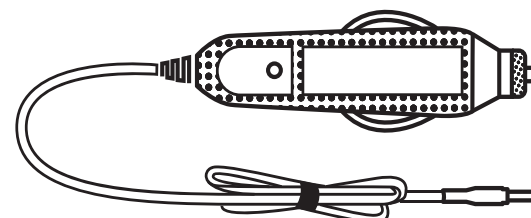
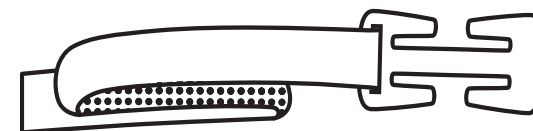
nachfolger GmbH
Boecklinstrasse 59 / 2
1020 Vienna
Austria, EU

www.nachfolger.com
info@nachfolger.com

Made in China
C101_830_D

 **nachfolger®**

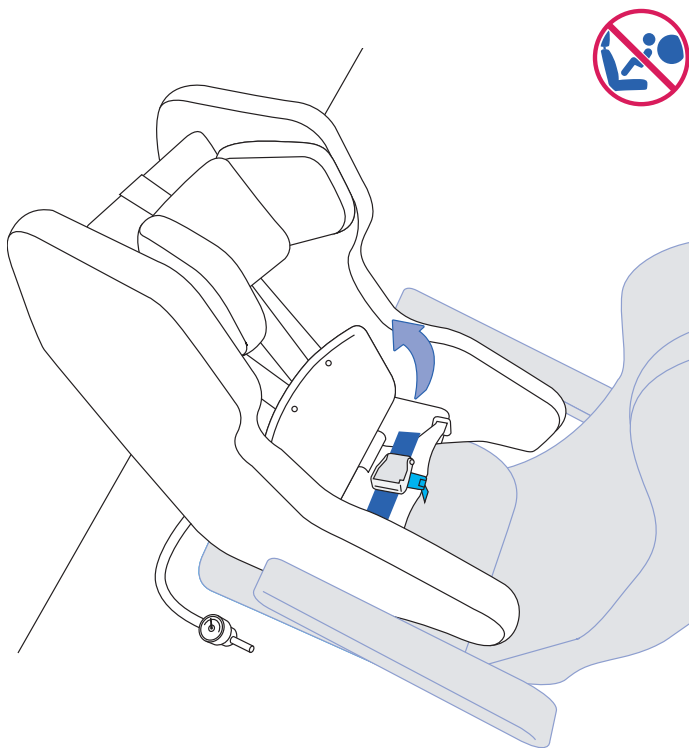
travel kit +



compatible with
nachfolger HY5 series

SAFETY INSTRUCTIONS FOR USE ON AN AIRCRAFT

UN R44/4 Group 0/1 (up to 18 kg)



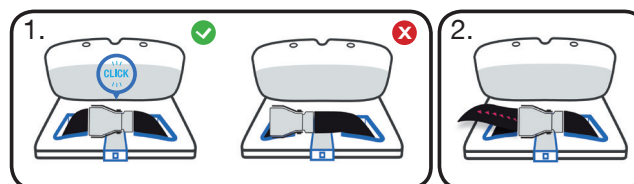
NOTE! Make sure that the mobile pump is fully charged, before starting the journey.

NOTE! The child car seat may not be installed within the effective range of an airbag.

NOTE! The child car seat is approved for front row seats and seats after a bulkhead in eco and premium-eco, business and first class seats or a seat to seat pitch of 36" and more. Check with your airline before flying about their safety regulations and using the child seat.

Installation

- The nachfolger HY5 must be place rearward facing on the seat
- Guide the aircraft belt through the blue guides on the nachfolger HY5
- Close the buckle of aircraft belt with an audible CLICK
- Make sure, that the buckle of aircraft belt is placed in the center of the HY5 (1, left picture)
- If the aircraft belt is too long and the buckle is located off-center, the belt must be shortened with the delivered belt reducer as shown in (3)
- If the belt buckle still lies in the area of the belt guides, the belt must be shortened furthermore. Roll the belt reducer up once more and thread the loose end of the belt behind the free hooks (4)
- Before closing the buckle of the aircraft, the shortened belt must be tightened.
- Tighten the belt (2)



NOTE! The aircraft belt must not be fixed with the belt clamp of the nachfolger HY5. Guide the aircraft belt above the closed belt clamp.

